

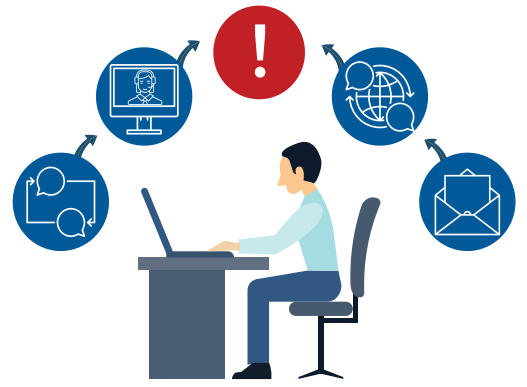
WORKING REMOTELY?

EVALUATE YOUR NETWORK

REMOTE WORK CHALLENGES

Your home network takes a beating running multiple real-time applications like video conferencing, instant messaging and collaboration tools.

These are the tools that you **DEPEND** on to stay connected while working remotely.



REMINDER! - you are also competing for bandwidth with everyone online in your home.

UGH...MY NETWORK IS SO **SLOW**

Sluggish bandwidth means calls become choppy or you lose connection during a video call - leading to lost sales, decreased productivity and overall frustration.

- **JITTER**
- **DELAY**
- **PACKET LOSS**



EVALUATE YOUR CONNECTION

VISIT: UCSCORE.COM

Evaluate your network in minutes - with no software installation. Quickly know exactly how your home network will perform to your real-time traffic demands.



HOW IT WORKS

- Sends packets between you and the UC Score server. Packets represent telephone or video calls.
- Your score is based on how many packets arrive.
- Delivers easily understood results page.



YOUR HOME NETWORK



UCSCORE SERVER

NETWORK RESULTS

After the test is completed, your scores are presented.

- 5 voice calls = 1 standard definition video call
- 10 voice calls = 1 high definition video call
- 32 voice calls = 3 high definition video calls



EXCELLENT



NEEDS CAUTION



UNACCEPTABLE

TAKE ACTION

'EXCELLENT' score? Great, keep working hard from home!

'NEEDS CAUTION' or 'UNACCEPTABLE' result? Start troubleshooting, check to see how many devices are connecting to your home network at any given time and experiment with testing your network at different times of the day to achieve better results.

NEXT STEPS If issues persist, get in touch with your service provider to address the challenges you are experiencing. Martello has solutions that can provide dashboard and monitoring capabilities, as well as fault remediation for both application and network issues.

GET IN TOUCH TODAY to find out how Martello can help optimize your remote work experience.